



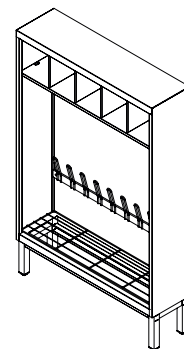
105A0011

Clothes rack

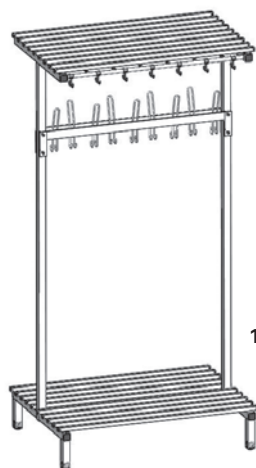
- Open children's wardrobe for 5 children
- 5 rooms, clothes rack, shoe rack and bottom grate
- H: 1410 x W: 900 x D: 250 mm without legs

CHILDREN'S WARDROBE

Blika's children's wardrobe in steel accommodates up to 5 children per module. Tubular legs can be purchased, but the modules must always be fixed to the wall. The cabinets are fully welded for an extremely robust construction, which is guaranteed to withstand everyday use.



105A0011



118M1001

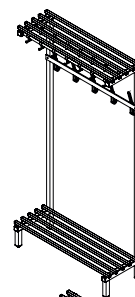
- Single wardrobe rack
- H: 1974 x W: 1000 x D: 377,5 mm
- Wallmounted
- With shoe shelf and hat shelf with double hooks
- Clothes rack with 9 double hooks
- Extra height for longer uniforms, for example overalls

WARDROBE RACKS

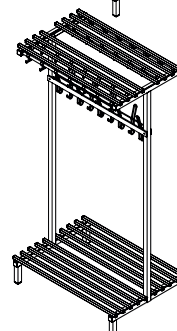
Blika's wardrobe racks are designed to stand freely in a room or for wall mounting.

There is plenty of room for shoes and many double hooks for clothes. Wardrobe racks are made with extra height for longer working uniforms.

- Double wardrobe rack
- H: 1949 x W: 1000 x D: 720 mm
- Standing alone
- With shoe shelf and hat shelf with double hooks
- Clothes rack with 9 double hooks
- Extra height for longer uniforms, for example overalls



118M1002



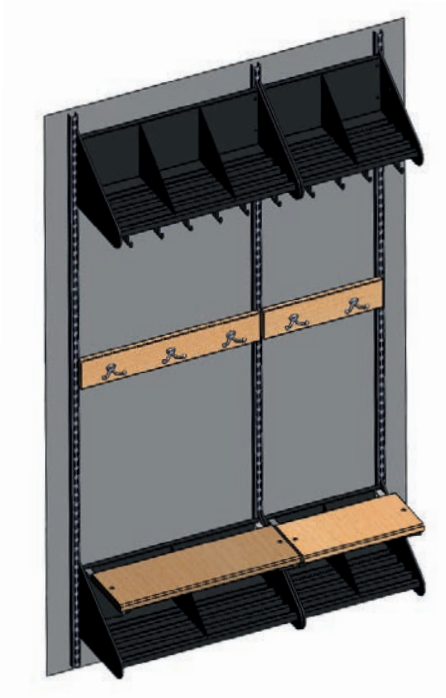
118M1001



INSTITUTIONAL FURNITURE

Blika's flexible children's wardrobe is designed for growing children, whether at kindergarten, school or leisure. The durable modules are mounted directly on wall tracks, and you can easily add a parcel shelf or move the rack up or down to suit the child's height. Furthermore, individual adjustments are possible, e.g. shoe racks, benches, coat hooks or hat racks.

Contact Blika for more information on Blika's flexible children's wardrobe.



Hat rack



Double hat rack



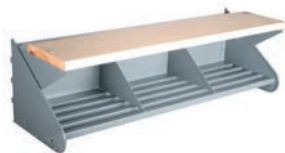
Shelf



Coat hooks



Shoe rack with bench



Shoe rack





Standard colours



RAL 7035
Light grey



RAL 5017
Traffic blue

Stocked colors (additional price)



RAL 9010
Pure white



RAL 1015
Light ivory



RAL 7036
Platinum
grey



RAL 7024
Graphite
grey



RAL 9005
Jet black



RAL 1004
Golden
yellow



RAL 3003
Ruby red



RAL 3020
Traffic red



RAL 5001
Green blue



RAL 6025
Fern green

Stocked laminate colors (additional price)



W 450



ARAP 138



F 2296



406 Lucida



F 6466



F 7961



F 2770



F 6467



879 Lucida



F 6468



K 1834



F 7853



F 7884



F 1485



K 1238



K 3210

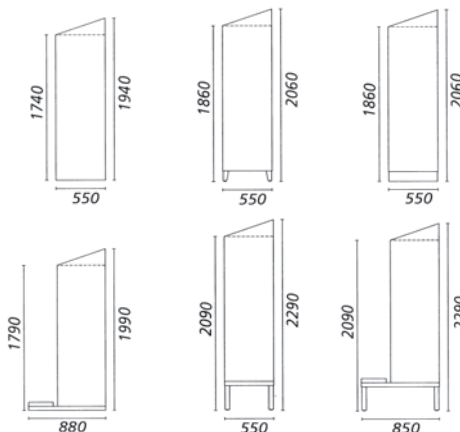
Other door variants, such as compact laminate, can be produced on request. It is possible to choose any other RAL or NCS colors at an additional price.

Abbreviations and dimensions

H: = Height, W: = Width, D. = Depth,
mm = millimeter, Ø. = diameter.

Unless otherwise specified, all dimensions are in mm.

Reservations are made for printing/typing errors, obsolete items and deviations in product photos or specifications.



Model GDTS (sloping top) is 2 cm lower on the back edge and 5 cm less deep than GS.

